

PRODUCT TECHNICAL DATA

Premium Tomato & Food Products

P.O. BOX 83 • ELWOOD, IN 46036 • TEL. (765) 557-5500 • FAX (765) 557-5501 • www.redgold.com



HA99

Revision Date
05/07/13

TOMATO SAUCE, 106 OZ

NET WT. 106 OZ. (6 LBS. 10 OZ.) 3.01kg

Nutrition Facts	
Serving Size 1/4 Cup (61g)	
Servings Per Container about 49	
Amount Per Serving	
Calories 20	Calories from Fat 0
% Daily Value*	
Total Fat 0g	0%
Saturated Fat 0g	0%
Trans Fat 0g	
Cholesterol 0mg	0%
Sodium 280mg	12%
Potassium 130mg	4%
Total Carbohydrate 4g	1%
Dietary Fiber 1g	4%
Sugars 2g	
Protein Less Than 1g	
Vitamin A 4%	Vitamin C 4%
Calcium 0%	Iron 4%
* Percent Daily Values are based on a 2,000 calorie diet. Your Daily Values may be higher or lower depending on your calorie needs.	
	Calories: 2,000 2,500
Total Fat	Less than 65g 80g
Sat Fat	Less than 20g 25g
Cholesterol	Less than 300mg 300mg
Sodium	Less than 2,400mg 2,400mg
Total Carbohydrate	300g 375g
Dietary Fiber	25g 30g

LABELING AREA

>40 in²

ADD %DV FOOTNOTE

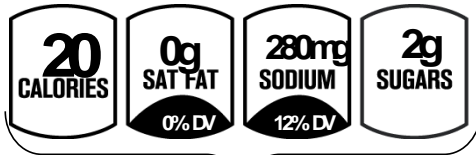
Yes

LABEL DIMENSIONS (WxH)

19-5/8"x6-5/8"

includes 1/2" right hand lap

PER 1/4 CUP SERVING



BASIC ICONS

INGREDIENT DECLARATION

Tomato Concentrate (Water, Tomato Paste), Water, Salt, Onion Powder, Garlic Powder, Citric Acid, Natural Flavors

COMMENTS

NSLP: 1.2oz = 1/4 cup serving of Red/Orange Vegetable
2.4oz = 1/2 cup serving of Red/Orange Vegetable
3.6oz = 3/4 cup serving of Red/Orange Vegetable

I certify that this information is true and correct.

Erin Webb

5/3/2013

Erin Webb

Date

Product Development