



Gregory Packaging, Inc.  
 365 South Street, Suite 103  
 Morristown, NJ 07960  
 973-465-1113  
 www.suncupjuice.com

## Suncup™ 100% Natural Fruit Punch

Pack Size: 70/4 ounce paper carton  
 Product Code: 030800

**Ingredients:** Water, Apple, Orange, Pineapple, Grape and/or Pear Juice Concentrates

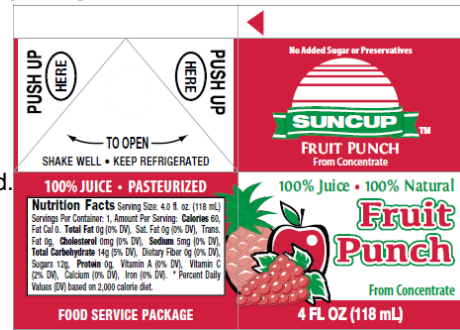
**Preparation Instructions:** Thaw before serving. Shake well. Serve chilled. Use within 10 days of thawing. Store thawed juice at 35° to 38° F

**Allergens:** None

**Code Date:** Julian pack date (i.e.: 15247 is 247<sup>th</sup> day of 2015)



Suncup™ 100% juice contains no added sugar, no preservatives, no flavoring, and no dyes.



| Nutrition Facts   |                     |
|---|---------------------|
| Serving Size: 4 fl. oz. (118 mL)  |                     |
| Servings Per Container: 1   |                     |
| Amount Per Serving  |                     |
| <b>Calories 60</b>  | Calories from Fat 0 |
|   | % Daily Value*      |
| <b>Total Fat 0 g</b>  | 0%                  |
| Saturated Fat 0 g   |                     |
| Trans Fat 0 g   |                     |
| <b>Cholesterol 0 mg</b>   | 0%                  |
| <b>Sodium 5 mg</b>  | 0%                  |
| <b>Total Carbohydrate 14 g</b>  | 5%                  |
| Dietary Fiber 0 g   |                     |
| Sugars 12 g   |                     |
| <b>Protein 0 g</b>  | 0%                  |
| Vitamin A 0%  | • Vitamin C 0%      |
| Calcium 0%  | • Iron 0%           |
| * Percent Daily Values are based on a 2,000 calorie diet. Your Daily Values may be higher or lower depending on your calorie needs. |                     |

| Shipping Info          |                |
|------------------------|----------------|
| GTIN                   | 00774840308007 |
| Gross Weight           | 21.25 lbs.     |
| Cube                   | .69            |
| Dimensions (L x W x H) | 17 x 12 x 6    |
| Cases/Pallet           | 81             |
| Tie                    | 9              |
| High                   | 9              |
| Shelf Life Frozen      | 9 months       |
| Shelf Life Thawed      | 10 days        |

| CN Credit  |  |
|--|--|
| <b>Suncup™ 4.0 fl. oz. 100% Fruit Juice = ½ cup fruit</b>  |  |
| <i>Nutrition Standards in the National School Lunch and School Breakfast Programs. - January, 2012</i> |  |

Updated: 03/01/2015

Submitted by:

**Greg Goulet**  
 Vice President – Sales  
 greg@suncupjuice.com