



3" Whole Grain Pretzel Bun

Product Code #703560

Each 2.19 oz Serving (1 Bun) = 2 oz Bread Equivalent.

Freezer Shelf life: 12 months/ Thawed Shelf life: 5 days

NUTRITIONAL INFO:

Calories: 160

Calories from Fat: 30

Total Fat: 3.5 g

Saturated Fat: 0

Trans Fat: 0

Cholesterol: 0 mg

Sodium: 170 mg

Total Carbohydrates: 28 g

Dietary Fiber: 2 g

Sugar: 2 g

Protein: 5 g

Vitamin A: 0%

Vitamin C: 6%

Calcium: 0%

Iron: 4%

PACKAGING INFO:

Case Count: 60

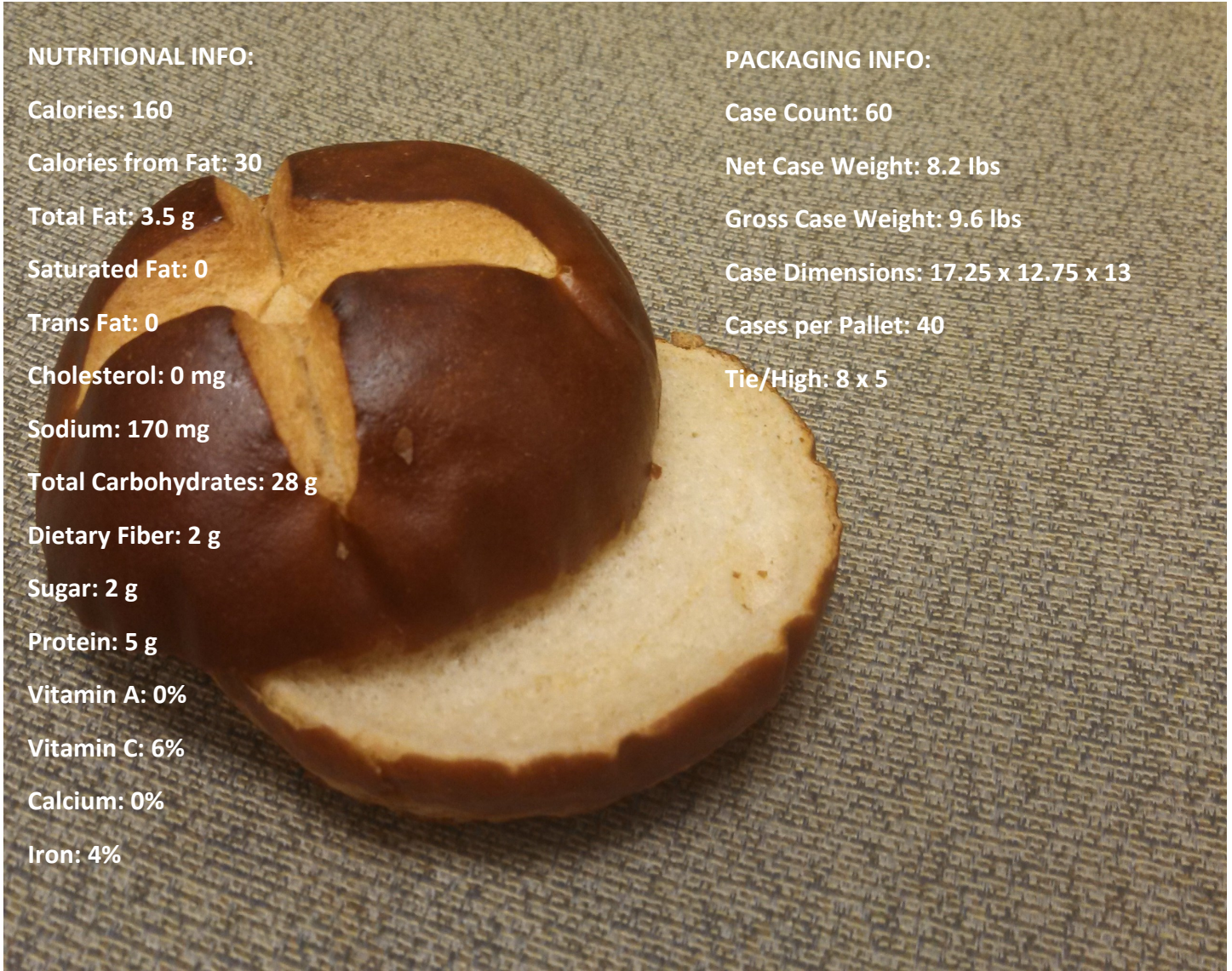
Net Case Weight: 8.2 lbs

Gross Case Weight: 9.6 lbs

Case Dimensions: 17.25 x 12.75 x 13

Cases per Pallet: 40

Tie/High: 8 x 5



Ingredients: Water, Whole Wheat Flour, Unbleached Unbromated Enriched Flour (Wheat Flour, Malted Barley Flour, Niacin, Reduced Iron, Thiamine Mononitrate, Riboflavin, Folic Acid), Canola Oil, Sugar, Yeast, Wheat Gluten, Malt, Salt Dough Conditioner (Wheat Flour, Malt Barley Flour, Ascorbic Acid, Soybean Oil, Enzymes), Enzymes, Sodium Hydroxide. **CONTAINS: WHEAT. PROCESSED IN A FACILITY THAT ALSO MANUFACTURES EGG, WHEAT, SOY**

I certify that the above information is true and correct

October 29, 2014

Printed Name: Lindsey Wherry

Signature:

CEM | For more product information contact Lindsey Wherry at Lwherry@cemsupplychain.com