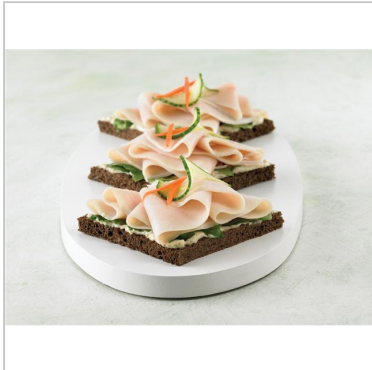


[Click to Print](#)

Front-of-house product application



Back-of-house product packaging

4* S/L Tky Breast (75712)

View similar products: [Oven-Roasted Turkey Breasts 1* thru 4*](#)

Turkey breast lobes are injected, marinated, naturally shaped and fully cooked. Packed 2 breasts/box; 20.00 lb avg. case weight. Shipped fresh.



This product is eligible for
Foodservice Rewards® points!

Product Information

Product Code: 75712
Case GTIN: 90072745757122
Item GTIN: 00072745757129
Case Count: 2/ 9.0 - 11.0 lb. breasts
Packaging: Grip & Tear™ Bag

Case Weight: 20 lb. avg. case wt.
Case Dimensions: 15.94 x 10.69 x 6.13
Case Cube: 0.6
Pallet Tie/High: 10 x 10
Cases per Pallet: 100

Ingredients

Turkey breast, turkey broth, contains 2% or less of salt, sugar, carrageenan, sodium phosphates.
ALLERGENS: NONE.

Features & Benefits

Oven Roasted - For customer pleasing taste.
Consistent Flavor - Always the same great taste.
Fully-Cooked Convenience - Ready to use at any time, in any recipe.
KeepEasy Packaging - Offers an extended shelf life (105 days, fresh).
100% Yield - No unsightly blemishes, no tough chewy silver straps (tendons), cleaner "face" and appearance, trimmed of fat.
Lean Turkey Meat - Nutrition your customers are looking for.

Other Information

Product Handling

105 day shelf life @ 28-36°F. 60 day guarantee to 1st receiver.

Storage Type

REFRIGERATED

Preparation & Cooking

Ready to serve at any time.

Serving Suggestions

Great for center-of-the-plate, carving, sandwiches, salads, hors d'oeuvres, shaving, dicing and more!

Nutritional Information**

Amount per Serving	
Serving Size: 2 oz. (56g.)	
Servings Per Case: Varied	
Calories: 45	Calories from Fat: 10
% Daily Value*	
Total Fat: 1.0 grams	1 %
Saturated Fat: 0.0 grams	0 %
Trans Fat: 0 grams	
Cholesterol: 25 mg	8 %
Sodium: 450 mg	19 %
Total Carbohydrate: 1 grams	0 %
Dietary Fiber: 0 g	
Sugars: 1 grams	
Protein: 9 grams	18 %
Vitamin A: 0 %	Vitamin C: 0 %
Calcium: 2 %	Iron: 2 %

*Percent Daily Values are based on a 2,000 calorie diet. Your daily values may be higher or lower depending on your calorie needs.
**This is a representation of the nutrition label. The actual nutrition label may vary slightly.

Specifications subject to change 8/1/2014

888-PERDUE-2
888-737-3832
perduefoodservice.com®